



*Deluxe Private Room*

## **YOUR ACCOMMODATIONS & SPECIAL FAMILY PROGRAMS**

All persons receiving septicemia recovery care will enjoy the comfort of a private or semi-private room.

- Room service dining for all 3 daily meals afforded at no additional charge per resident request
- Flat screen television with preferred satellite channels
- Comfortable seating areas throughout the facility for family members and other visitors
- Family members and visitors may join their loved one for meals at a charge of only \$3.00 per meal

## **WHO ARE WE**

Legends Care Rehabilitation and Nursing Center is a leading provider of senior healthcare services, specializing in post-acute care. In 2017, Legends was one of only 14 facilities in the State of Ohio to be awarded the Bronze Quality award by the American Health Care Association. We are a 65-bed skilled nursing facility providing both comprehensive short-term rehabilitation, transitional care, and long term care.

## **OUR LOCATION**

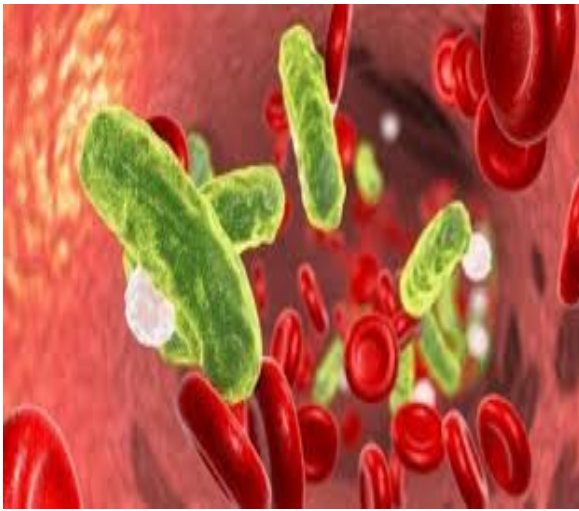
(insert map, directions, address, phone, fax number)



## **SEPTICEMIA RECOVERY PROGRAM**



2311 Nave Road, SE  
Massillon, Ohio 44646  
Phone: (330) 837-1001



## ABOUT OUR SEPSIS RECOVERY PROGRAM

More than 1.6 million people in the U.S. are diagnosed with sepsis each year. This constitutes one every 20 seconds and the incidence is rising by 8% every year. Greater than 60% of patients who develop severe sepsis in the United States are over the age of 65.

In recognizing the ever growing need for specialized post-acute care of persons suffering from sepsis, Legends Care Rehabilitation and Nursing Center brought together a team of experts to manage the recovery process.

## INTRODUCING OUR TEAM LEADERS

### The Infectious Disease Specialist

Badie Alnemr, M.D., serves as the Program Leader. Dr. Alnemr is Board Certified in Infectious Diseases and Internal Medicine. He is affiliated with area hospitals including Aultman Hospital and Mercy Medical Center. Dr. Alnemr:

- Educates and collaboratively plans care with the resident, his/her family, nursing personnel and primary care physicians.
- Develops, implements and ensures timely follow-up on septicemia management protocols including those associated with appropriate antibiotic use.
- Reviews and adjusts the program at set intervals for each resident.

### The Infection Preventionist

A Registered Nurse who is an expert in infectious disease management and prevention coordinates the interdisciplinary team effort. The Infection Preventionist also reviews individual cases to ensure that best practices are followed.



## BEST PRACTICES

Throughout the course of each resident's stay, the interdisciplinary team follows what is known as a care pathway. The pathway is the main tool used to manage the quality of care by implementing interventions in a standardized fashion at pre-set intervals based on the *best* practices associated with septicemia management.

We use a care pathway to ensure that each practice that has proven to be effective in a resident's recovery is implemented unless medically contraindicated. This helps to facilitate timely recovery and patient centered goal achievement.